

Progressive Multi-focal Silicone Hydrogel Lenses

CONTAMAC

contamac.com



Patient LG Female Age: 48 years

Resolution for 'Dry eyes'

History: LG has tried various combinations of different Multifocal, Spherical and Toric contact Lenses without success. LG complains of poor near vision and poor comfort levels with her previous prescriptions. LG is a secretary, she works up to 9 hours per day using a computer and would prefer to wear contact lenses all day. This was not achievable with her current fitting. LG has good distance VA with her current prescription but lacks intermediate and near vision. These are her primary concerns. She has self referred to another contact lens specialist in an attempt to obtain an improved result

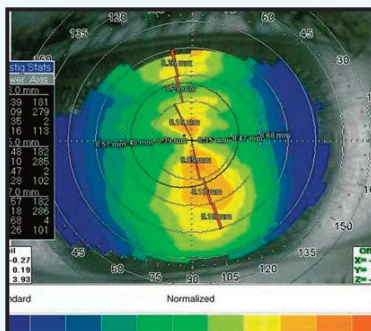
Follow up refraction:

OD: +2.25 / -1.25 x 13°

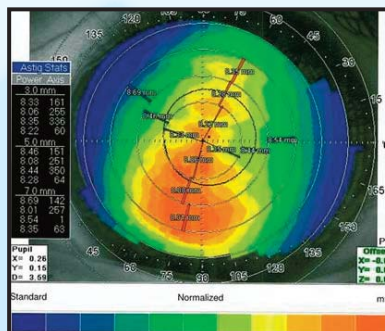
OS: +3.00/-1.00 x 160° VA Binocular: 6/6+

Dominant eye Left.

Topography: RE



LE



OD: 8.16 / 8.41 @ 6°

OS: 8.14/8.33 @ 146° Corneal diameter: 11.30

The eye has no apparent ocular problems. LG explained that the previous prescription resulted in her eyes feeling dry and becoming sore and red. This increased with time.

First lens parameters:

OD: Torelis SL3 BC 9.20; Power +2.32 / -1.30 x 013° ADD +1.75; Diameter 13.80; Definitive SIH

OS: Torelis SL3 BC 9.10; Power +3.12 / -1.07 x 160° ADD +1.75; Diameter 13.80; Definitive SIH

OU with front geometry Bifocal (Bf, Simultaneous Bifocal with Center Near and Periphery Distance)

Central optic Zone OD: 2.75 mm / OS: 2.25 mm

LG experiences excellent comfort all day. Stabilization OD: 0° / OS: 170° VA Distance: OD 6/6- OS: 5/6 ; Reading Binocular 4/6+ after a few days at the office. VA is "better than ever", but near VA is not optimum. If not possible, she will continue as is and add additional reading glasses as necessary.

**Second lens parameters:****OD: Torelis SL3 BC 9.20; Power +2.32 / -1.30 x 13° ADD +1.75; Diameter 13.80; Definitive SIH****OS: Torelis SL3 BC 9.10; Power +3.12 / -1.07 x 170° ADD 1.75; Diameter 13.80; Definitive SIH**

Both sides with the front geometry Multi progressive (Mp, Simultaneous Multi concentric Near/Distance Geometry with Center Near)

Central optic Zone OD: 1.50 mm / OS: 1.50 mm

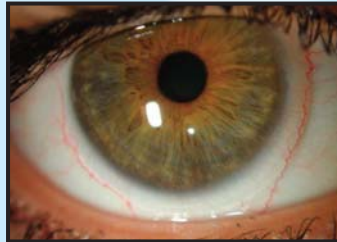
LG experienced great improvement in lens sensation immediately after lens insertion and is satisfied with her all-day comfort. Stabilization OD: 0° / OS: 170° VA Distance: OD 5/6 OS: 5/6 ; Reading Binocular 6/6.

Follow-up:

After one month, LG returned for her final examination and was very pleased with the improved VA which lasts all day, especially in the office. LG does not require additional correction with spectacles. She tells her friends of her new life, spectacle free. The comfort levels are reported as very good for the whole day.

Conclusion:

With the new designed Multi progressive Multifocal geometry, LG achieved excellent visual acuity with her work.

**Distributed by:**www.swisslens.ch

SwissLens SA
Ch. des Creuses 9
CH-1008 Prilly
Switzerland

Telefon: +41 21 620 06 68

CONTAMAC

**Contamac Ltd**

Orchard House Bearwalden Business Park
Wendens Ambo Saffron Walden
Essex CB11 4JX UK

Tel: +44 (0)1799 544400
Fax: +44 (0)1799 543000

E-mail: professionalservices@contamac.com

CONTAMAC US

**Contamac US**

806 Kimball Avenue
Grand Junction, CO 81501

Tel: 1-(970) 242 3669 Fax: 1-(970) 243 5501
Toll Free: 1-866 US CONTAMAC
(1-866 872 6682)

E-mail: professionalservices@contamac.com